

Introduction

# Showffice: Flexible Workspace Solutions

Empowering modern businesses with innovative and collaborative coworking environments designed for growth and productivity.

Company Brief : March 2026

*Private & Confidential*



## **Redefining the Modern Workspace**

---

Established in April 2025, Showffice provides flexible solutions that empower professionals to work smarter and grow faster.

### **Premium Solutions**

Tailored offerings including Day-desks, Private cabins, and Dedicated desks for diverse business needs.

### **Comprehensive Infrastructure**

State-of-the-art meeting rooms and high-speed internet to ensure maximum business productivity.

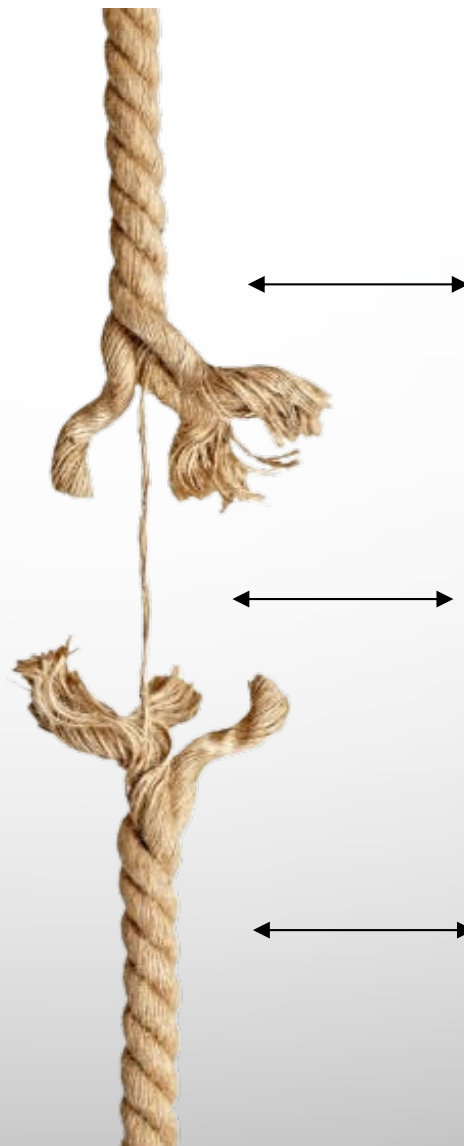


### **Productive Ecosystem**

Fostering a vibrant community through personalized hospitality and networking opportunities.

## **Vision, Mission and Core Values**

A relentless focus on productivity and growth-driven excellence through a resourceful and innovative workspace.



### **Sustainable Growth**

A commitment to sustainability and growth-driven excellence for our clients and our team.

### **Empowered Innovation**

Integrating new technologies and innovative designs to foster a creative working atmosphere.

### **Achieving Together**

Promoting collective success through collaboration and shared resources within our community.

## **Diverse Workspace Portfolios**

From individual day passes to full enterprise managed offices, we cater to every segment of the market.

### **Coworking Spaces:**

Vibrant and collaborative environments designed for freelancers and large teams alike.

### **Private Cabins:**

Focused and exclusive environments that can serve as a company's main headquarters.

### **Virtual Offices**

Build credibility with a premium address and mail handling without a physical footprint.

### **Meeting & Board Rooms:**

Fully-equipped rooms with projection screens and whiteboards for professional pitches.

## The Showffice Competitive Edge

Why businesses choose us: From prime locations to transparent dealings and modern design.



**Prime Locations** : Easy access for clients and employees in high-growth business districts.



**Plug & Play** : Start working from day one with zero setup time or infrastructure worries.



**Customer Centricity** : A dedicated team focused on personalized service and client success.



**Transparent Relations** : Clean and trustworthy dealings with clients & vendors.



**Value for Money**: Premium Office spaces delivered at fair and transparent costs.

## Current Presence and Expansion

Rapidly expanding our footprint across North India and targeting high-performing Tier 2 markets.

Location	Area (Sq. Ft.)	Status / Timeline
Lucknow - Gomti Nagar	35,000	Operational (Aug 2025)
Lucknow - Hazrat Ganj	25,000	Upcoming (May 2026)
Gurgaon - Sector 44	30,000	Upcoming (May 2026)
Noida - Sector 63	60,000	Upcoming (Aug/Sept 2026)

Milestone

## Performance Metrics & Achievements

**showffice**  
COWORKING SPACE

Strong market validation through rapid occupancy growth and successful enterprise deal closures.



### Total Current Area

Square footage of our flagship operational center in Lucknow.

**35K**

### Occupancy Rate

Achieved near-full capacity by February 2026, within months of launch.

**98%**

### Enterprise Deal

Successfully secured our first major enterprise deal within 5 months of operations.

**102**

## Executive Leadership Team

Led by industry veterans with deep expertise in managed office spaces, finance, and operations.



**Aishwarya Jaiswal**

Director

Aishwarya Jaiswal is an entrepreneur and Director at Showffice (Officez Space Solutions Private Limited). With a background in technology, operations, and agribusiness, he is building modern coworking solutions that empower startups, professionals, and growing businesses.

In addition, Aishwarya has been actively involved in managing and leading operations of his family-owned Agri-business. By qualification, Aishwarya is a Bachelor of Technology from AKTU.



**Nitin Srivastava**

Founder & CEO

Nitin Srivastava is the Founder & CEO of Showffice, bringing over 18 years of experience in finance, compliance, and business operations. With a strong background in accounts, taxation, and corporate compliance, holds a Master of Commerce with a strong foundation in finance, accounting, and business management.

Nitin has worked with leading coworking and business service organizations. Through Showffice, he focuses on delivering flexible coworking spaces, managed offices, and end-to-end business support services for startups, freelancers, SMEs, and enterprises, helping them operate efficiently and scale with confidence.



**Ashish Rastogi**

Co-Founder & COO

Ashish Rastogi is the Co-Founder & COO at Showffice. With over 16 years of experience in managed office spaces, enterprise office solutions, and business operations, he specializes in driving business growth, optimizing operations, and delivering high-quality workspace solutions.

Ashish, a graduate in Hospitality & Hotel Management, Ashish has extensive experience in P&L management, sales strategy, and client relationship management, helping organizations build efficient and scalable workspace environments across India.

## Team

**showffice**  
COWORKING SPACE

## Management & Strategic Talent

Experienced professionals overseeing technology, finance, sales, and operational excellence.



### Utkarsh Deep Srivastava

VP - Sales & Operations

Utkarsh Srivastava is the VP- Sales & Operations at Showffice with over 12 years of experience in sales, operations management, and customer success. He specializes in building scalable business models, driving revenue growth, and creating high-performing teams. With a strong background in hospitality, coworking operations, & client relationship management, Utkarsh focuses on delivering exceptional customer experiences while ensuring operational excellence and sustainable business growth.



### Babita Rawat

Head of Accounts & HR

Babita Rawat is an experienced Finance and HR professional currently serving as Head of Accounts & HR at Showffice. With overall 8 years' experience a strong background in accounting, financial management, and people operations, she focuses on building efficient financial systems and streamlined HR processes. Her expertise includes Zoho Books, GST & TDS filing, bank reconciliation, invoicing, MIS reporting, and organizational compliance. Babita has previously held key roles in accounts and finance across coworking and financial service organizations, contributing to operational efficiency and structured financial management.



### Akash Deep

Director of Technology & Strategy

Akash Deep is a strategic IT leader with over 20 years of experience specializing in digital transformation and infrastructure for the managed workspace industry. Currently Director of Technology & Strategy at Showffice Coworking Space, he excels at scaling IT operations, implementing automation, and managing end-to-end systems for multi-location portfolios. With a Master's in IT and a proven track record of leading high-impact teams, Akash bridges the gap between complex technology and organizational growth.

## Management & Strategic Talent

Experienced professionals overseeing technology, finance, sales, and operational excellence.



### Manoj Yadav

Director – Projects & Commercials

Manoj is a seasoned professional with 16 + years of qualitative experience in Projects, commercials and procurement.

Manoj has previous experience of handling complete end to end Project Management working for multiple large organizations and is skilled in Budget planning, Cost Control, Supplier Relationship for coworking and Retails businesses.



### Nisha Kumari

Manager- Marketing & Communications

Nisha is an experienced Marketing professional currently serving as a Manager -Marketing & Communications at Showffice. With an overall 5+ years' of experience and an extremely strong background in marketing, communications and SEO strategies , she is responsible for updated positioning of the organization and public relations. Her expertise include strategic marketing planning, digital SEO, on page optimization and data analysis.

## Future Roadmap: 2026-2027

A two-phase expansion plan targeting both major metros and high-growth Tier 2 cities.

### February 2026

#### Profitability

Achieved 98% occupancy and became profitable in the first center.

### Phase II Goals

Targeting Tier 2 markets including Ahmedabad, Kochi, Jaipur, Indore, and Varanasi.

### August 2025

#### Market Entry

Launched first center in Lucknow (Gomti Nagar) with 80k Sq. Ft.

### Phase I Expansion

Launching 3 new centers: Lucknow, Gurgaon, and Noida.

## Ammenities We Offer



Meeting Rooms



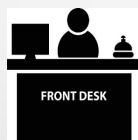
Event Space



24 Hrs Security  
and CCTV



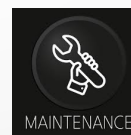
Housekeeping



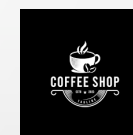
Front Desk



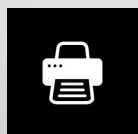
Indoor Game  
Zone



Repairs &  
Maintenance



Cafe



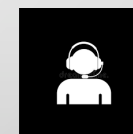
Printer &  
Photocopy



Beverages



High Speed  
Internet

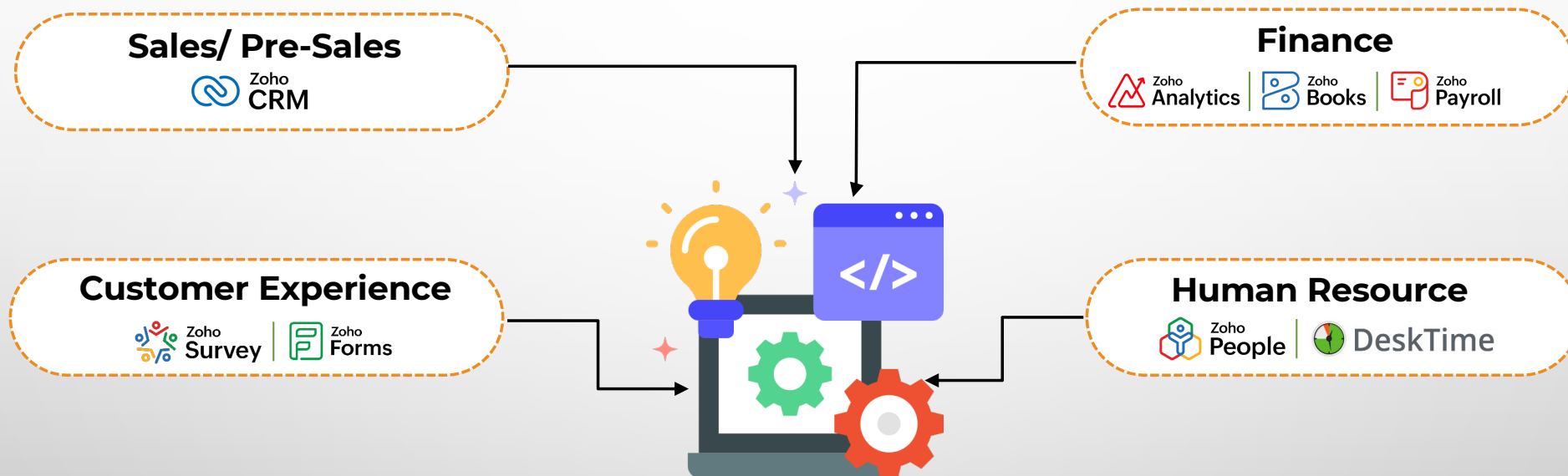


IT Support

## Trusted by Our Community



## Our Technology in Business



## Selected Client Testimonials

“

I would like to share my feedback regarding the office ambience and workspace environment.  
Overall, the office provides a positive and supportive atmosphere that encourages collaboration and teamwork. The workspace is comfortable, and the environment helps employees stay motivated and engaged throughout the day. I appreciate the efforts taken to maintain a professional and welcoming workplace. Such an environment contributes greatly to employee productivity and overall job satisfaction.  
Thank you for creating a pleasant and motivating work environment.

 upGrad

I would like to extend my sincere appreciation to the entire Showffice Co-working team for maintaining such a professional, well managed and collaborative work environment. The infrastructure, cleanliness and overall facilities are well maintained, which creates a very comfortable and productive atmosphere for all clients and team working here.  
A special thanks to the management for their proactive approach, prompt support and continuous efforts in ensuring smooth day to day operations. Keep the excellent work and continue setting high standards in the co-working industry.

 YES SECURITIES

I would like to sincerely appreciate the exceptional effort put in by the entire Showffice Coworking Space team and management. The professionalism, seamless operations, and the well-maintained environment truly reflect the dedication and commitment of the team.  
Your continuous focus on quality service and creating a productive workspace does not go unnoticed. Keep up the great work and continue setting benchmarks for excellence.

 EURONICS

I would like to sincerely appreciate the excellent support and positive environment provided at the Showffice.  
The onboarding process was very smooth, and the staff has been extremely helpful.  
Thank you for making the experience so comfortable and professional.

 AM

We have a very positive experience with Showffice. The atmosphere is calm, professional, and highly conducive to productivity. The workspace is clean, well-organized, and designed to create a comfortable working environment. The facilities are excellent, with reliable infrastructure, well-maintained amenities, and everything needed for a smooth workday. Overall, it provides a great balance of comfort and professionalism, making it an ideal place to work.

 Hashorn Systems

”

# Community Event With & For Clients

showffice  
COWORKING SPACE



# showffice

COWORKING SPACE


**Flexible workspaces for all businesses**

Contact us today to find the perfect workspace for your growing business.

**HEADQUARTERS:** 8TH FLOOR, UNIT NO. 801 TO 809, LEVANA CYBER HEIGHTS, LUCKNOW U.P. -226010.

 [sales@showffice.com](mailto:sales@showffice.com)

 0522-4615427

 +91 7271937925

